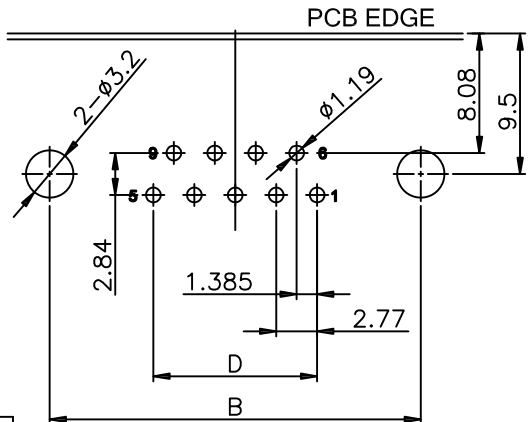
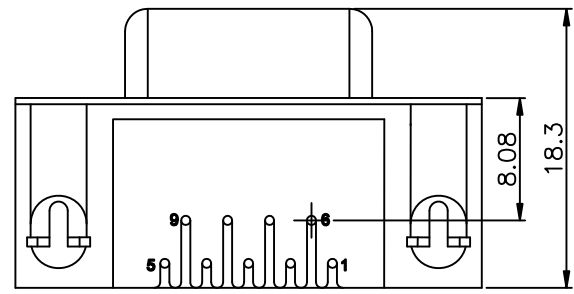
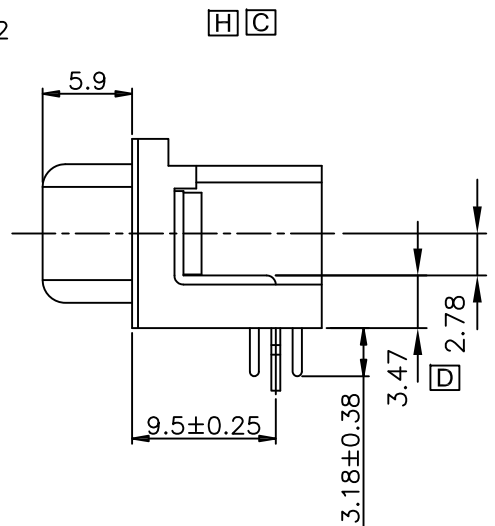
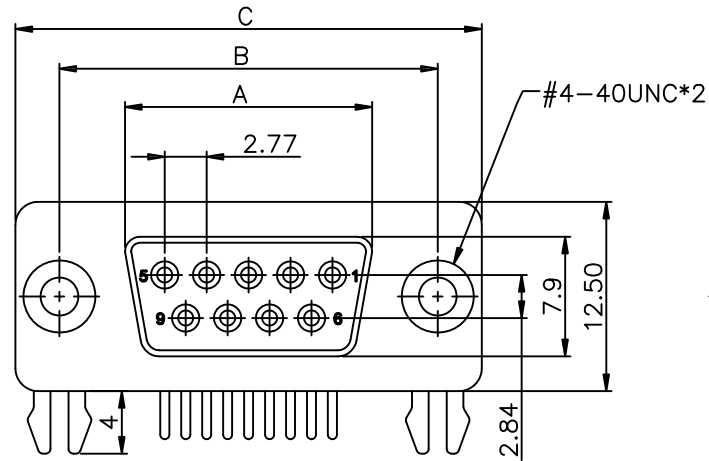


1 2 3 4 5 6 7 8

A B C D E



SPECIFICATIONS

1. MATERIALS:
 - a). Insulator: See Order Information. UL 94V-0.
 - b). Contacts: Copper Alloy.
 - c). Contact Finish: Gold Over Nickel.
 - d). Shell: Steel, Nickel Plated.
 - e). Boardlock: Brass, Tin Plated.
 - f). Riveted insert: Brass, Nickel plated.
2. ELECTRICAL CHARACTERISTICS:
 - a). Current Rating: 2 Amperes.
 - b). Dielectric Withstanding Voltage: AC 1000V For 1 Minute.
 - c). Insulation Resistance: 1000 Megaohms Minimum.at DC 500V.
 - d). Contact Resistance: 15 Milliohms Max.
 - e). Operating Temperature: -55°C to+105°C.
3. RoHS COMPLIANT.
4. For Order Information, See Sheet 2.

TABLE A

POSITION	A ± 0.25	B ± 0.25	C ± 0.38	D
09	16.30	25.00	30.80	11.08
15	24.60	33.30	39.20	19.39
25	38.35	47.05	53.05	33.24
37	54.80	63.50	69.40	49.86

[H]	Remove Dim. 4.60 & 9.14	Kevin	7/15/09'
[G]	Add Black color, Nylon 9T Material Option	AXL	10/2/08'
[F]	MODIFY NOTES	Kevin	9/19/08'
[E]	Sheet 2: Zone D-5, Dim. Change from 4.8 to 4.5mm	SWL	9/10/08'
[D]	ADD DIMENSIONS	AXL	8/11/08'
[C]	ADD DIMENSIONS	AXL	8/6/08'
[B]	ADD OPTION	AXL	4/1/07'
[A]	ISSUED	AXL	2/20/07'
REV	DESCRIPTION	NAME	DATE

TOLERANCE	
LINEAR	ANGLES
X. ±	X° ±
.X ± 0.25	.X° ±
.XX ± 0.15	.XX° ±
.XXX ± 0.05	.XXX° ±

GENESIS
 TECHNOLOGY, INC
1015 GRANT STREET S.E. ATLANTA, GA 30315
 a Genesis Electro-Mechanical Company

TITLE: DB FEMALE THRUHOLE TYPE			
PART NO.	DB-XX 0XXX		
DWG NO.	SC-10647		
UNITS	SCALE	SHEET	REV
MM	NONE	1 OF 2	H


1 2 3 4 5 6 7 8

Order Information:

DB - XX 0 X X X

Mating and Mounting Options

Insulator Color & Material:

- 1= Black, PBT + 30% Glass Fiber.
- 2= PC99 Blue Pantone 661C, PBT + 30% Glass Fiber.
- 3= Black, PA9T (Nylon 9T). 

Plating:

- 1= Selective Gold
- 2= Selective 15u" Gold
- 3= Selective 30u" Gold
- 4= Full Gold Flash

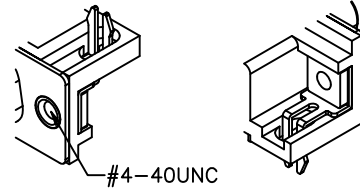
Polarity:

- 0= Female

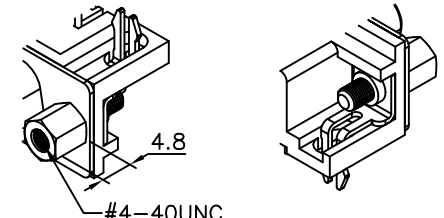
Position:

- 09= 9 PIN
- 15= 15 PIN
- 25= 25 PIN
- 37= 37 PIN

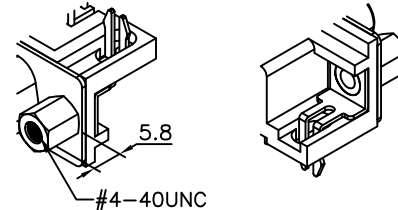
D-SUB



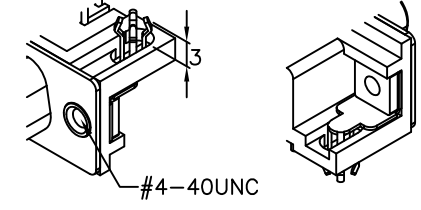
0= #4-40UNC Threaded Riveted W/ Boardlock



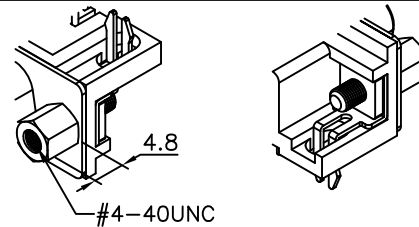
5=BOARDLOCK AND JACK SCREWS ASSEMBLED



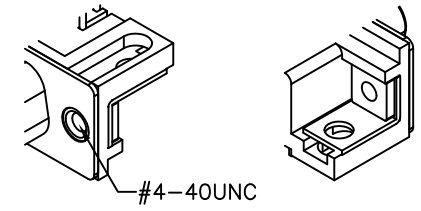
1= RIVETED W/BOARDLOCK AND RIVETED HEX NUT



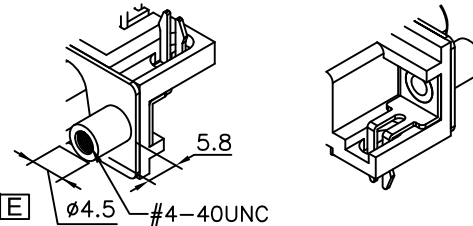
6=4-40 THREADED RIVETED W/4 PRONG BOARDLOCK



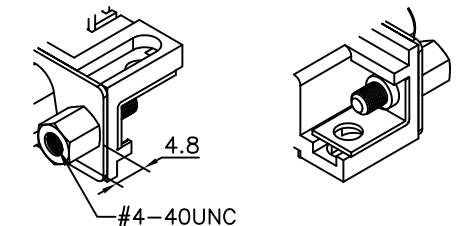
2= 4-40 THREADED RIVETED W/BOARDLOCK AND JACK SCREWS



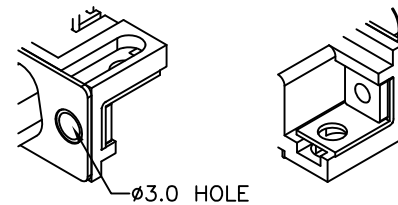
7=4-40 THREADED RIVETED W/Ø3.2 THROUGH HOLE



3= RIVETED W/BOARDLOCK AND RIVETED ROUND NUT



8=L SHAPE Ø3.2 THROUGH HOLE AND JACK SCREWS ASSEMBLED



4=Ø3.0 HOLE RIVETED W/Ø3.2 THROUGH HOLE

PART NO.	DB-XX0XXX	SHEET	REVISION
DWG NO.	SC-10647	2 OF 2	SEE SHEET 1