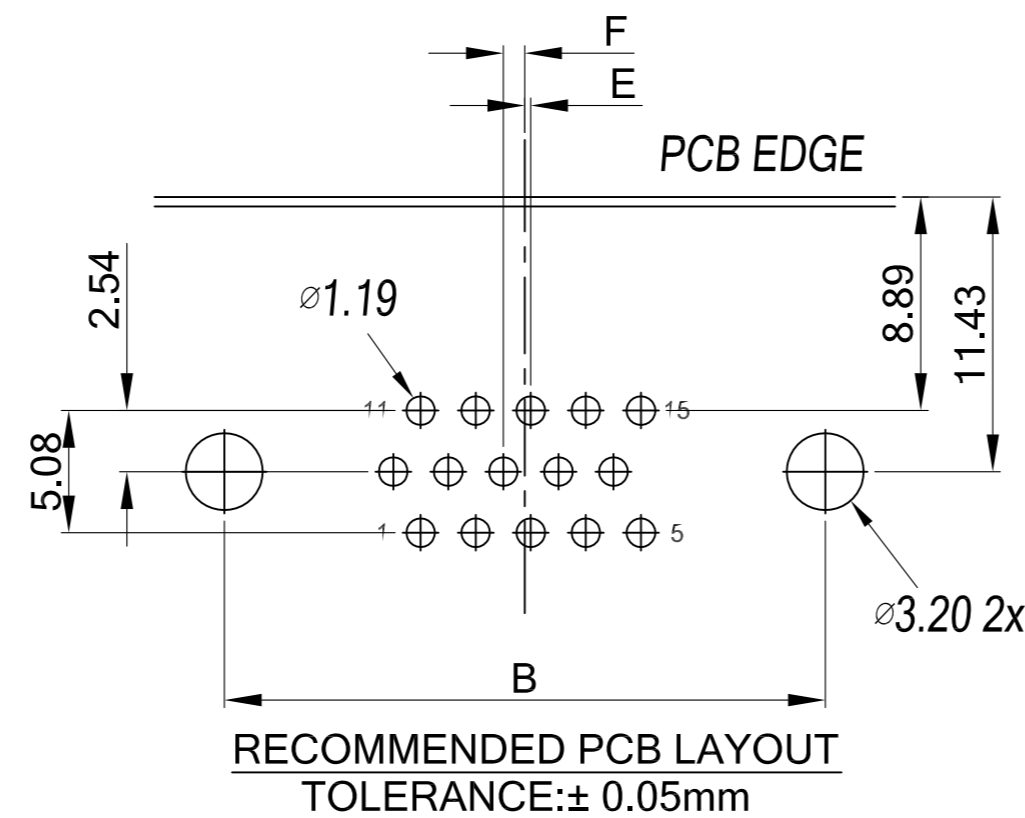
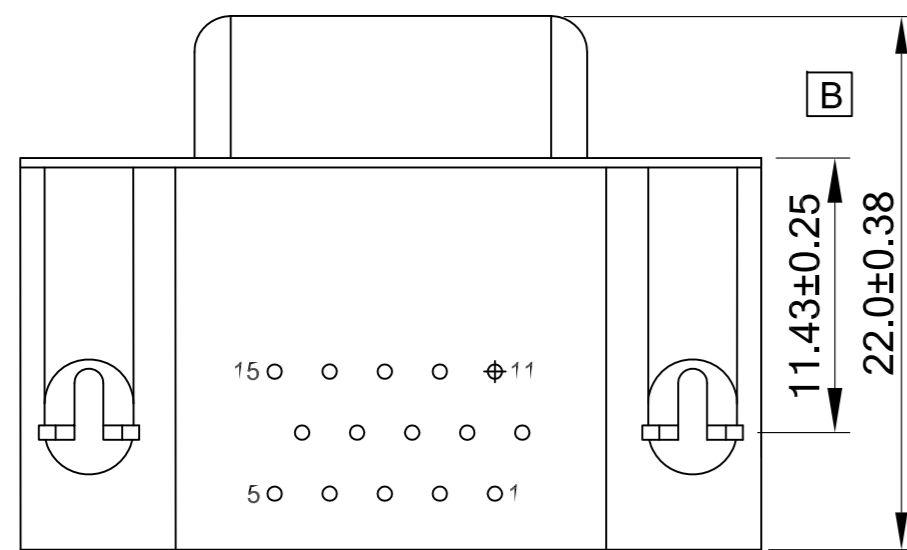
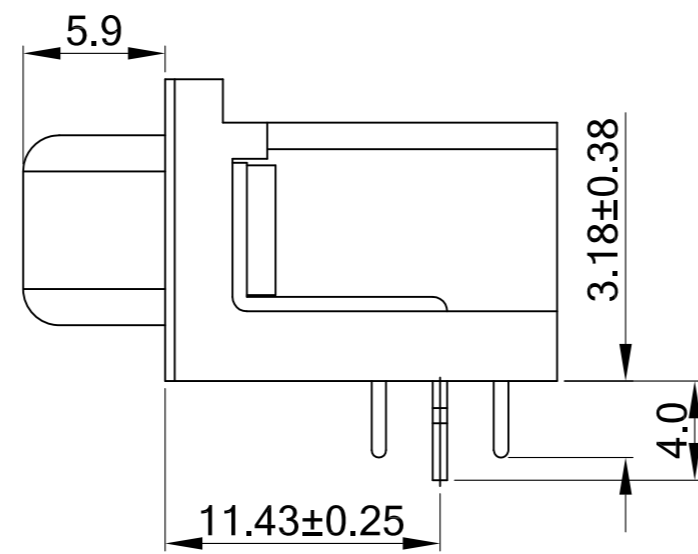
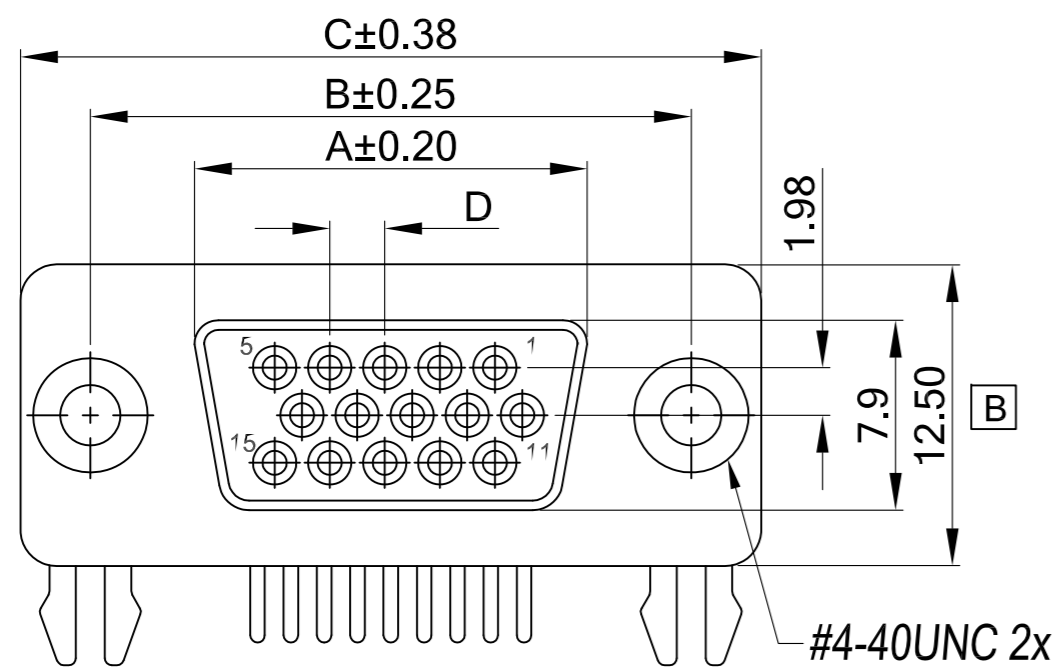


REV.	ECN. NO.	DESCRIPTION	ENG	DATE
A		ISSUED	AXL	2/22/10'
B		MODIFIED MATERIAL MODIFIED DIMENSION 3 PLACES	Jeff	12/13/10'

ORDER INFORMATION:

DBHD- 15 0 1 1 B 1 22

- MATING AND MOUNTING OPTIONS:
22: RIVET W/ BOARDLOCK, 4#40 THREAD RIVET
- SHELL PLATING:
1: NICKEL
- INSULATOR MATERIAL:
B: PBT
- INSULATOR COLOR:
1: BLACK
2: FOR PC99 COLOR (15PIN=BLUE)
- PLATING:
1: SELECTIVE GOLD FLASH
- POLARITY: 0: FEMALE
- POSITION: 15 26 44 62
- HIGH DENSITY D-SUB 90° 8.89mm MOUNT



NOTES:

1. MATERIAL:
INSULATION: PBT+25% GLASS FIBER (UL94V-0).
CONTACT: BRASS.
CONTACT PLATING: GOLD FLASH ON CONTACT AREA,
TIN 80u" MIN. ON SOLDER TAIL,
NICKEL 50u" MIN. UNDER-PLATED OVERALL.
SHELL: STEEL, NICKEL 50 u" PLATED.
BOARDLOCK: STEEL, TIN 50u" PLATED, NICKEL 50u" UNDER-PLATED OVERALL.
RIVETED INSERT: BRASS, NICKEL 50u" PLATED.
2. SPECIFICATION:
CURRENT RATING: 2 AMP.
DIELECTRIC WITHSTANDING VOLTAGE: 1000V AC FOR 1 MINUTE.
INSULATION RESISTANCE: 1000Mohs MIN. AT 500V DC.
CONTACT RESISTANCE: 30m ohms MAX.
OPERATING TEMPERATURE: -55°C~+105°C

POS.	A	B	C	D	E	F
15	16.30	25.00	30.80	2.29	0.25	0.89
26	24.60	33.30	39.20	2.29	0.51	0.64
44	38.35	47.05	53.05	2.29	0.51	0.64
62	54.80	63.50	69.40	2.41	0.58	0.62

RoHS Compliant

GENERAL TOLERANCE	ANGLE TOLERANCE	DRAWN	DATE	genesis connected solutions	
X.±	X°±	AXL	11/6/09'	TITLE. HIGH DENSITY D-SUB FEMALE DIP TYPE	
.X±0.40	.X°±	DESIGN	DATE	PART NUMBER. DBHD-XX0XXX1XX	
.XX±0.30	.XX°±	CHECKED	DATE	DRAWING NO. GTi10-30025	
.XXX±0.20	.XXX°±	APPROVED	DATE	SIZE A4 REV. B	
MATL SEE BOM					
FINISH SEE NOTES					
SCALE N/A	UNIT mm				
SHEET 1 OF 1					

ITEM	NAME	Q'TY	DESCRIPTION	NOTE
1				
2				
3				
4				
5				
6				
7				
8				