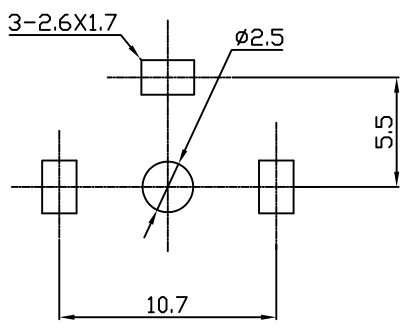


- NOTES:**
1. Contact Resistance: 30m Ohm Max.
  2. Insulation Resistance: 100M Ohm Min. At 500V DC.
  3. Dielectric Withstanding Voltage: 500VAC For 1 Minute.
  4. Insertion Force: 15~55N.
  5. Extraction Force: 10~50N.
  6. RoHS Compliant

**ORDER INFORMATION:**  
GTi09-20065



Dimensions of PC board holes(Commend)

NO.	NAME	MATERIAL	FINISH	Q'TY
1	BARREL	H65 T=0.4	CuSn	1
2	INSULATOR	FIBERGLASS		1
3	FRAME	H62 T=0.4	CuSn	1
4	CENTER PIN	H62 T=0.3	CuSn	1
5	SPRING	QSn6.5-0.1 T=0.25	CuSn	1

				TOLERANCE		GENESIS TECHNOLOGY, INC		TITLE: FEMALE IEC CONNECTOR			
D	DIMENSION .PCB LAYOUT AND NOTES CHANGE	Hanson	12/17/09'	LINEAR	ANGLES	7F, No. 191, Sec. 2 Chung-Yang Rd., Tu-Cheng City Taipei Hsien, Taiwan		PART NO. GTi09-20065			
C	DIMENSION AND PCB LOYOUT CHANGE	SWL	09/28/09'	X.± 0.38	X°± 10°	APPD:	MAT'L:	DWG NO. GTi09-20065			
B	DELETE DIMENSIONS	Kevin	04/23/09'	.X± 0.25	.X°± 5°	CHKD:	FINISH:	UNITS	SCALE	SHEET	REV
A	ISSUED	Kevin	04/23/09'	.XX± 0.13	.XX°± 2°	DRWN: Kevin	Q'TY:	m.m.	NONE	1 OF 1	D
REV	ECN NO.	NAME	DATE	.XXX± 0.05	.XXX°±						

