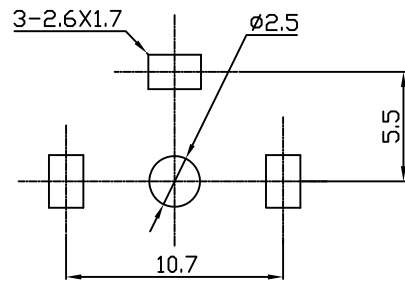



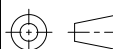
- NOTES:**
1. Contact Resistance: 30m Ohm Max.
 2. Insulation Resistance: 100M Ohm Min. At 500V DC.
 3. Dielectric Withstanding Voltage: 500VAC For 1 Minute.
 4. Insertion Force: 15~55N.
 5. Extraction Force: 10~50N.
 6. RoHS Compliant

ORDER INFORMATION:
GTi09-20064



Dimensions of PC board holes(Commend)

NO.	NAME	MATERIAL	FINISH	Q'TY
1	BARREL	H65 T=0.40	CuSn	1
2	INSULATOR	FIBERGLASS	WHITE	1
3	FRAME	H62 T=0.40	CuSn	1
4	CENTER PIN	H62 T=0.30	CuSn	1

				TOLERANCE				TITLE: MALE IEC CONNECTOR					
				LINEAR	ANGLES			PART NO. GTi09-20064					
[C]	DIMENSION ,PCB LAYOUT AND NOTES CHANGE	Hanson	12/18/09'	X.± 0.38	X°± 10°	APPD:	MAT'L:	DWG NO. GTi09-20064					
[B]	DIMENSION AND PCB LAYOUT CHANGE	SWL	09/28/09'	.X± 0.25	.X°± 5°	CHKD:	FINISH:		UNITS	SCALE	SHEET	REV	
[A]	ISSUED	Kevin	04/23/09'	.XX± 0.13	.XX°± 2°	DRWN: Kevin	Q'TY:		m.m.	NONE	1 OF 1	C	
REV	ECN NO.	NAME	DATE	.XXX± 0.05	.XXX°±								