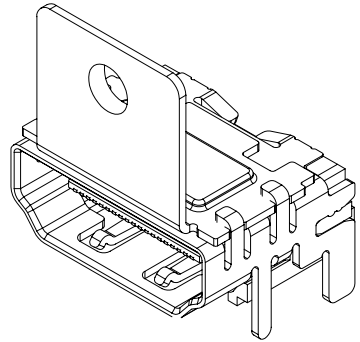
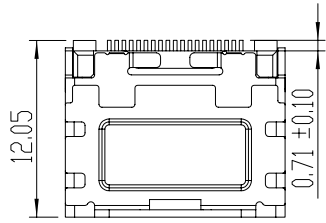


REV.	ECN. NO.	DESCRIPTION	NAME	DATE
A		ISSUE	SWL	10/14/09
B		ADDED ORDERING INFORMATION	FOX	02/19/10'
C		CORRECTED DIMENSION C3: WAS 13.30 IS: 12.30	FOX	03/17/10'

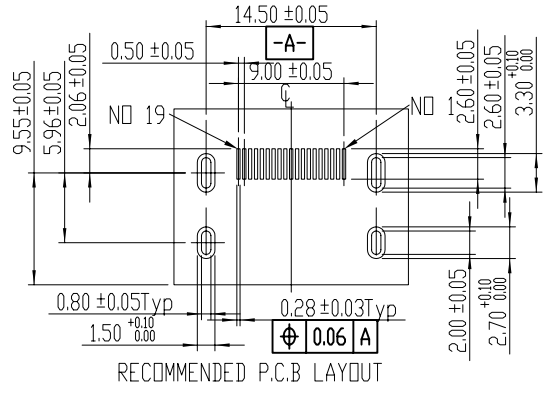
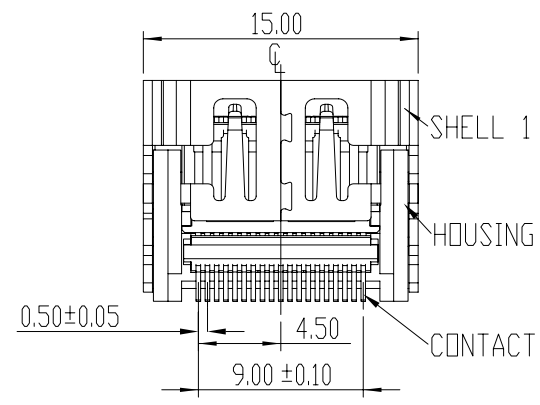
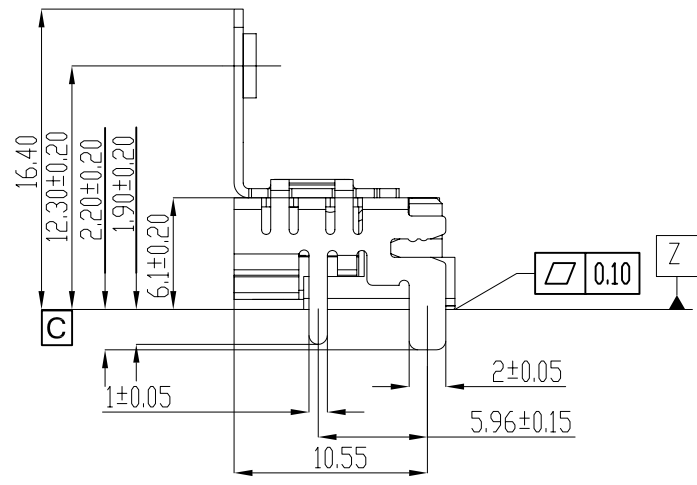
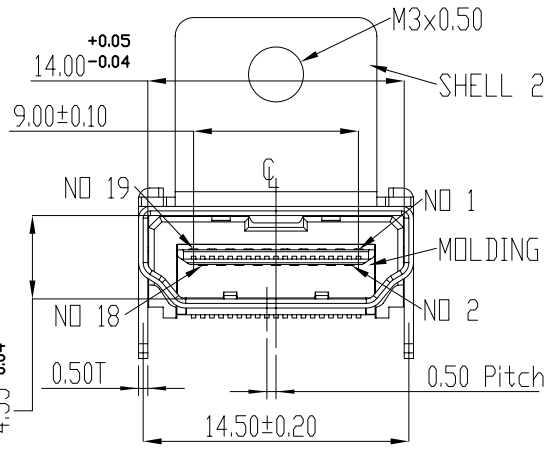


- NOTES:
- SOLDERTAIL TO BE WITHIN 0.05 UPWARD AND 0.15 DOWNWARD FROM Z-DATUM PLACE AND COPLANALITY OF SOLDERTAILS TO BE WITHIN 0.10 MEASUREMENT POINT SOLDERTAILS TIP
 - MATERIAL: HOUSING: THERMOPLASTIC, COLOR: BLACK, UL-94V0
MOLDING: THERMOPLASTIC, COLOR: BLACK UL-94V0
SHELL 1: COPPER ALLOY, T=0.50mm
SHELL 2: SPCC, T=0.50mm
TERMINAL: COPPER ALLOY, T=0.20mm
 - FINISH: CONTACTS: GOLD PLATE ON MATING SURFACE, G/F PLATE ON SOLDERTAIL, ALL OVER NICKEL UNDER PLATE
SHELL: SEE ORDERING INFORMATION

B

ORDER INFORMATION
HDAR- 2D 19-B K X X T 1A
① ② ③ ④ ⑤ ⑥ ⑦ ⑧

- CONNECTOR:
HDAR: HDMI R/A CONNECTOR
- TYPE:
2D: HDMI 19 PIN SMT CONNECTOR W/ SCREW TAP
- POSITIONS:
19: 19 POSITIONS
- INSULATOR MATERIAL:
B: LCP
- INSULATOR COLOR:
K: BLACK
- CONTACT PLATING:
2: 3u" Au ON CONTACT AREA, BRIGHT TIN PLATING ON SOLDER PIN
4: 10u" Au ON CONTACT AREA, BRIGHT TIN PLATING ON SOLDER PIN
5: 15u" Au ON CONTACT AREA, BRIGHT TIN PLATING ON SOLDER PIN
6: 30u" Au ON CONTACT AREA, BRIGHT TIN PLATING ON SOLDER PIN
B: 3u" Au ON CONTACT AREA, GOLD FLASH PLATING ON SOLDER PIN
D: 10u" Au ON CONTACT AREA, GOLD FLASH PLATING ON SOLDER PIN
E: 15u" Au ON CONTACT AREA, GOLD FLASH PLATING ON SOLDER PIN
F: 30u" Au ON CONTACT AREA, GOLD FLASH PLATING ON SOLDER PIN
- SHIELD PLATING:
3: ALL OVER NICKEL UNDER PLATE, GOLD PLATE ON THE POST
A: ALL OVER NICKEL UNDER PLATE
- PACKING
T: TRAY PACKING



RoHS Compliant

GENERAL TOLERANCE	ANGLE TOLERANCE	DRAWN	DATE	 connected solutions	TITLE, 19 PIN SMT HDMI CONNECTOR W/ SCREW TAP
X ± 0.30 X ± 0.20 XX ± 0.10 XXX ± 0.05	X° ± 2.00° X° ± 1.00° XX° ± 0.5°	SWL	10/14/09		
MATERIAL: SEE BOM		DESIGN	DATE		PART NUMBER, HDAR-2D19-BKXXT1A
FINISH: SEE NOTES		CHECKED	DATE		DRAWING NO. GTI09-30226
SCALE: N/A		UNIT: mm	APPROVED	DATE	SIZE: A4 REV: C
SHEET 1 OF 1					

ITEM	PART NUMBER	Q'TY	DESCRIPTION	NOTE
1				
2				
3				
4				
5				
6				
7				
8				