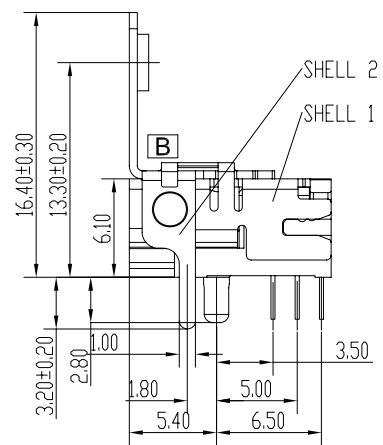
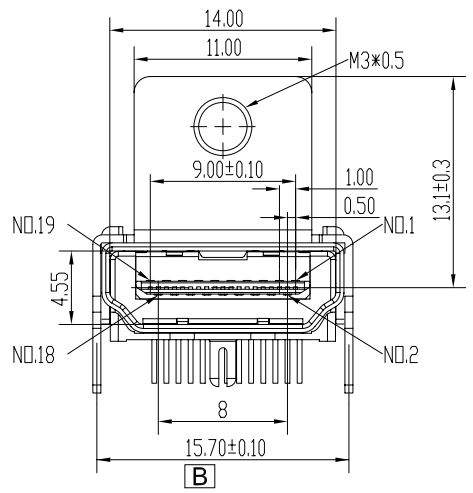
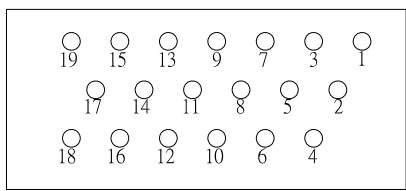


NOTE:
 1. MATERIAL: HOUSING :LCP, COLOR:BLACK,UL-94V0
 MOLDING :LCP,COLOR:BLACK,UL-94V0
 SHELL1:COPPER ALLOY,T=0.50 MM
 SHELL2:SPCC,T=0.50 MM
 CONTACT:COPPER ALLOY,T=0.20 MM
 2. FINISH:CONTACTS:GOLD PLATE ON MATING SURFACE, TIN ON
 SOLDER TAIL,ALL OVER NICKEL UNDER PLATE
 SHELL1:ALL OVER NICKEL UNDER PLATE
 SHELL2:ALL OVER NICKEL UNDER PLATE
 3. INSPECTION SYMBOL:
 ● : MANUFACTURER INSPECTION
 ◆ : Q.C INSPECTION
 4. RoHS Compliant


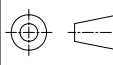


ORDER INFORMATION
 HDAR- 2L 19 - B K X 3 T 1A
 ① ② ③ ④ ⑤ ⑥ ⑦ ⑧

- CONNECTOR:
HDAR: HDMI R/A CONNECTOR
- TYPE:
2L: FEMALE, DIP TYPE
- POSITIONS:
19: 19 POSITIONS
- INSULATOR MATERIAL:
B: LCP
- INSULATOR COLOR:
K: BLACK
- CONTACT PLATING:
2: 3u" Au ON CONTACT AREA, BRIGHT TIN PLATING ON SOLDER PIN
3: 5u" Au ON CONTACT AREA, BRIGHT TIN PLATING ON SOLDER PIN
4: 10u" Au ON CONTACT AREA, BRIGHT TIN PLATING ON SOLDER PIN
5: 15u" Au ON CONTACT AREA, BRIGHT TIN PLATING ON SOLDER PIN
6: 30u" Au ON CONTACT AREA, BRIGHT TIN PLATING ON SOLDER PIN
- SHIELD PLATING:
3: SHELL1:ALL OVER NICKEL UNDER PLATE,GOLD PLATE ON THE POST
SHELL2:ALL OVER NICKEL UNDER PLATE
- PACKING
T: TRAY PACKING



PIN POSITION

				TOLERANCE		 <small>7F, No. 191, Sec. 2 Chung-Yang Rd., Tu-Cheng City Taipei Hsien, Taiwan</small>		TITLE: HDMI DIP TYPE				
				LINEAR	ANGLES			PART NO. HDAR-2L19-BKX3T1A				
				X. ± 0.30	X° ± 2.00°			DWG NO. GTI09-25165				
[B]	REVISE DRAWING	Vegas	12/17/09'	.X ± 0.20	.X° ± 1.00°	APPD:	MAT'L:					
[A]	ISSUED	Vegas	12/10/09'	.XX ± 0.10	.XX° ± 0.5°	CHKD:	FINISH:		UNITS	SCALE	SHEET	REV
REV.	ECN NO.	NAME	DATE	.XXX ± 0.05	.XXX° ±	DRWN: Vegas	Q'TY:		MM	NONE	1 OF 1	B