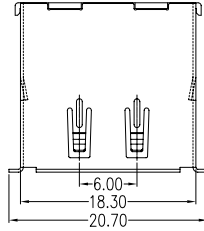


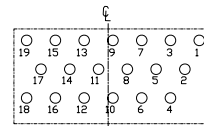
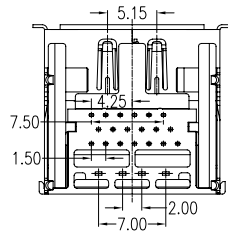
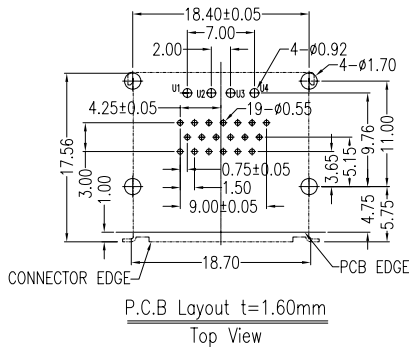
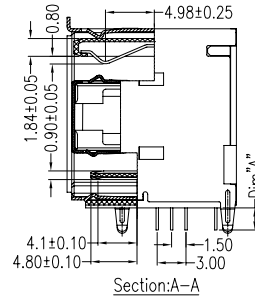
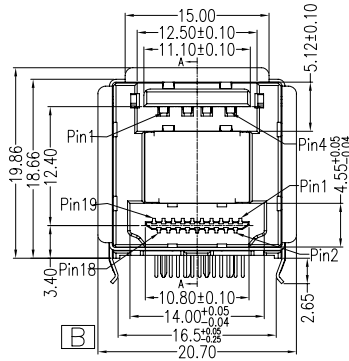
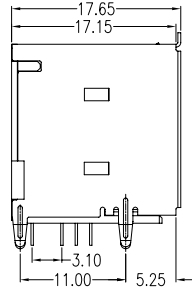
HDMI Pin's Define			
Pin	Signal Assignment	Pin	Signal Assignment
1	TMDS Date2+	2	TMDS Date2 Shield
3	TMDS Date2-	4	TMDS Date1+
5	TMDS Date1 Shield	6	TMDS Date1-
7	TMDS Date0+	8	TMDS Date0 Shield
9	TMDS Date0-	10	TMDS Clock-
11	TMDS Clock Shield	12	TMDS Clock+
13	CEC	14	Reserved(N.C.on device)
15	SCL	16	SDA
17	DDC/CEC Ground	18	+5V Power
19	Hot Plug Detect		

USB Pin's Define	
Pin Number	Signal Name
S1	VBUS
S2	D-
S3	D+
S4	GDN

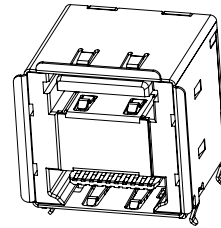


Unit:mm

Standard	Dim A
HDUR-2223-AKX1T1F	2.15~2.30
HDUR-2323-AKX1T1F	3.10



HDMI Pin Position



3D Drawing

**NOTES:**

**Material**

Housing : PBT, UL 94-0 Rated  
 Retainer : Nylon66, UL 94-0 Rated  
 Contact(HDMI) : Phosphor Bronze,Gold plating over Nickel on contact area; Tin Plating on Solder Tail.  
 Contact(USB) : Phosphor Bronze,Gold plating over Nickel on contact area; Tin Plating on Solder Tail.  
 Shell(Inside) : SUS304  
 Shell(Outside) : SPCC, Tin Planting over Nickel.

**\*HDMI Electrical Specification**

Operation Voltage: 40 VAC max.  
 Current Rating: 0.5 Ampere per contact  
 Contact Resistance: 10 Milliohms max.  
 Insulation Resistance: 100 megohms min.  
 Dielectric Withstanding Voltage: 500 VAC

**\*USB Electrical Specification**

Rated Voltage and Current : 1.5A at 250V AC min;  
 Contact Resistance: 30 Milliohms max.  
 Insulation Resistance: 1000 megohms min At 500V DC.  
 Dielectric Withstanding Voltage: 500 V AC For 1 minute.

**\*Environmental**

Operating Temperature : -55°C to +85°C.

**PART. NUMBER**

HDUR-2X 23 - A K X 1 T 1F

① ② ③ ④⑤⑥⑦

① CONNECTOR:

HDUR: USB + HDMI PLUG CRT

② TYPE:

22: DIP TERMINAL LENGTH 2.15~2.30

23: DIP TERMINAL LENGTH 3.10

③ POSITION:

23: 23 POSITIONS

④ INSULATOR MATERIAL:

A: PBT

⑤ INSULATOR COLOR:

K: BLACK

⑥ CONTACT PLATING:

1: GOLD FLASH

5: 15u" GOLD

6: 30u" GOLD


⑦ SHIELD PLATING :

1: SPCC, TIN PLATING

⑧ PACKING

T: TRAY PACKING

RoHS Compliant

				TOLERANCE		 7F, No. 191, Sec. 2 Chung-Yang Rd., Tu-Cheng City Taipei Hsien, Taiwan A Genesis Electro-Mechanical Company		TITLE: USB + HDMI PLUG CRT			
				LINEAR	ANGLES			PART NO. HDUR-2X23-AKX1T1F			
				X.±0.50	X°.±3°			DWG NO. GTi10-25022			
[B]	REVISE TOLERANCE	Vegas	01/06/11'	.X±0.38	.X°±3°	APPD:	MAT'L:	UNITS	SCALE	SHEET	REV
[A]	ISSUED	Vegas	02/11/10'	.XX±0.25	.XX°±3°	CHKD:	FINISH:	mm	NONE	10F1	B
REV.	ECN NO.	NAME	DATE	.XXX±0.20	.XXX°±3°	DRWN: Vegas	Q'TY:				