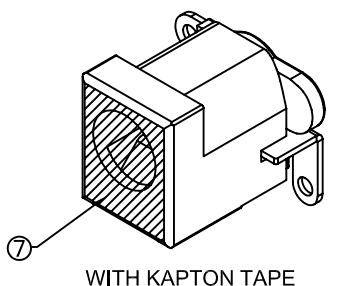
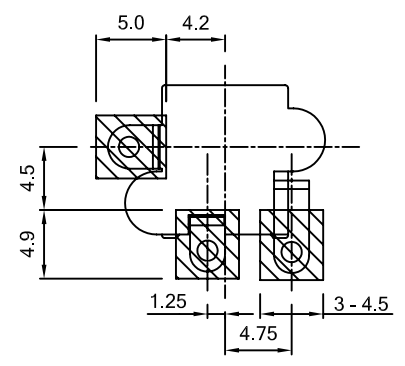


ORDERING INFORMATION:

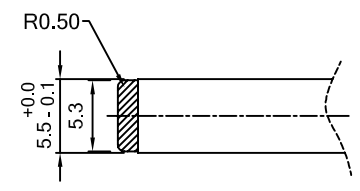
	PART NO.	PIN DIA.	TOLER.	KAPTON TAPE
 SCHEMATIC	SDC255-A	2.00	+0.0 -0.1	N/A
	SDC255-B	2.50	+0.0 -0.1	N/A
	SDC255-C	2.00	+0.0 -0.1	YES
	SDC255-D	2.50	+0.0 -0.1	YES



WITH KAPTON TAPE



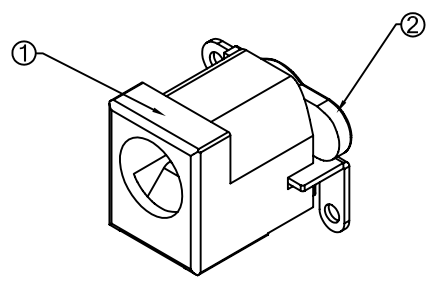
RECOMMENDED PADS LAYOUT
<TOP VIEW>
NOTE: TOLERANCE FOR PCB LAYOUT IS = ±0.05



Ø5.5 mm PLUG

NOTES:

- RATINGS
 - VOLTAGE RATING: 18 V DC
 - CURRENT RATING: 4 AMPERE
 - OPERATING TEMPERATURE: -25°C ~ +85°C
- ELECTRICAL
 - CONTACT RESISTANCE: PLUG TO CONTACT 50mΩ MAX
CONTACT TO SHUNT 30mΩ MAX
 - INSULATION RESISTANCE: 100 M OHMS MIN
 - DIELECTRIC WITHSTANDING VOLTAGE: 500 V AC/RMS
- RESISTANCE TO SOLDERING HEAT: 260°C ± 5°C FOR 5 SECONDS
- RoHS 6 / 6 COMPLIANT



WITHOUT KAPTON TAPE

ITEM	NAME	MATERIAL	Q'TY	FINISH
7	POLYIMIDE TAPE		1	
6	PIN TERMINAL	BRASS	1	SILVER 30u" MIN OVER Ni 30u" MIN
5	SHUNT TERMINAL	BRASS	1	SILVER 30u" MIN OVER Ni 30u" MIN
4	SPRING TERMINAL	PHOSPHOR BRONZE	1	SILVER 30u" MIN OVER Ni 30u" MIN
3	CENTER PIN	BRASS	1	Ni 30u" MIN
2	BOTTOM COVER	PA-10T, UL94V-0	1	
1	HOUSING	LCP, UL94V-0	1	

REV	ECN NO.	NAME	DATE	TOLERANCE		APPD:	MAT'L:	DWG NO.	UNITS	SCALE	SHEET	REV
				.XX±0.20	.XX'±							
D	CORRECTED BOM ADDED NOTES	FOX	7/7/11'	LINEAR	ANGLES							
C	ADD CURRENT RATING	AXL	3/8/11'	X.±	X'.± 5'							
B	MODIFY THE DIMENSIONS	Hanson	2/16/11'	.X±0.30	.X'± 3'							
A	ISSUED	AXL	2/2/06'	.XX±0.20	.XX'±							
REV	ECN NO.	NAME	DATE	.XXX±	.XXX'±	DRWN: AXL	Q'TY:					



TITLE:	Ø 2.0/Ø 2.5 DC POWER JACK VERTICAL TYPE			
PART NO.	SDC-255-X			
DWG NO.	SC-10197			
UNITS	SCALE	SHEET	REV	
MM	NONE	1 OF 1	D	