

1 2 3 4 5 6 7 8

A

B

C

D

E

A

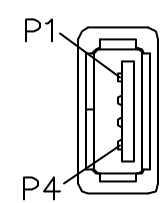
B

C

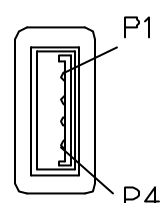
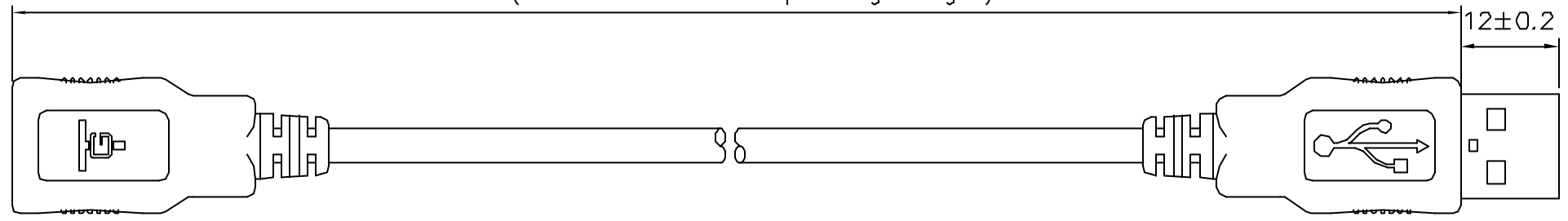
D

E

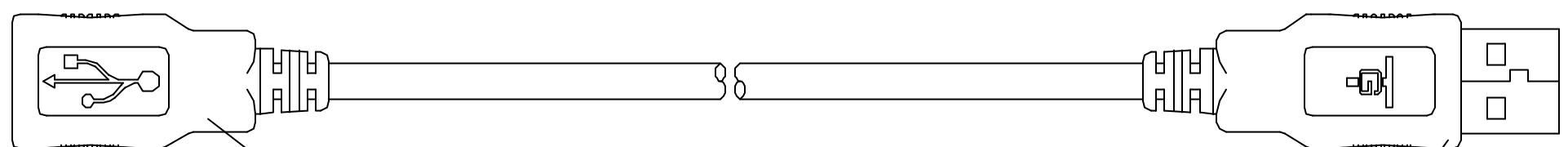
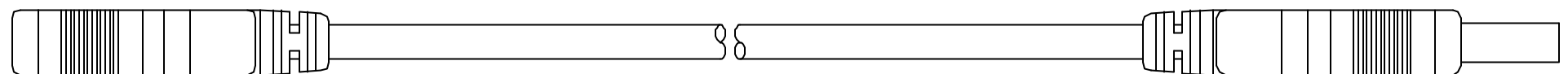
X ( See Notes 4 for Specifying Length)



J1



J2



NOTES:

- CABLE: [28AWG\*1P+24AWG\*2C+A,E,B]TIN  
 INSULATION: 1P: HDPE, OD=φ0.84±0.05mm, COLOR: WHITE&GREEN(TWISTED PAIR).  
 2C: SR-PVC, OD=φ1.05±0.05mm, COLOR: RED, BLACK.  
 JACKET: PVC, OD=φ4.7±0.1mm, COLOR: BLACK.(UL2725)
- 100% TEST OPEN AND SHORT  
 INSULATION RESISTANCE: 20M ohms  
 CONDUCTOR RESISTANCE: 2 ohm.  
 HI-POT: 200V DC.
- RoHS COMPLIANT.
- Specify Length as Suffix on Part Number in mm.  
 For Example:  
 USB-10597-1800 = 1800mm Long USB Cable.

WIRE LIST

J1	COLOR	J2	
1	RED	1	
2	WHITE	2	TWISTED PAIR
3	GREEN	3	
4	BLACK	4	
SHELL	DRAIN WIRE	SHELL	

5	OVER-MOLD	1SET	PVC BLACK	SC-10154
4	USB A CONN	1SET	GOLD FLASH	
3	OVER-MOLD	1SET	PVC BLACK	
2	USB AF CONN	1SET	PE	
1	PRE-MOLD	1SET	GOLD FLASH	
NO.	DESCRIPTION	Q'TY	MATERIAL	NOTES

TOLERANCE	
LINEAR	ANGLES
X.±	X'±
.X±0.4	.X'±
.XX±0.2	.XX'±
.XXX±0.15	.XXX'±



TITLE: USB A-TYPE MALE TO FEMALE CABLE ASSY			
PART NO.		USB-10597-X	
DWG NO.		SC-10597	
	UNITS	SCALE	SHEET
	MM	NONE	1 OF 1
			REV
			A

A	ISSUED	AXL	1/3/07'
REV	ECN NO.	NAME	DATE

1 2 3 4 5 6 7 8